

Statistics for Illegal Gambling Activities

0011

National Gambling Board
2007/2008 Financial Year

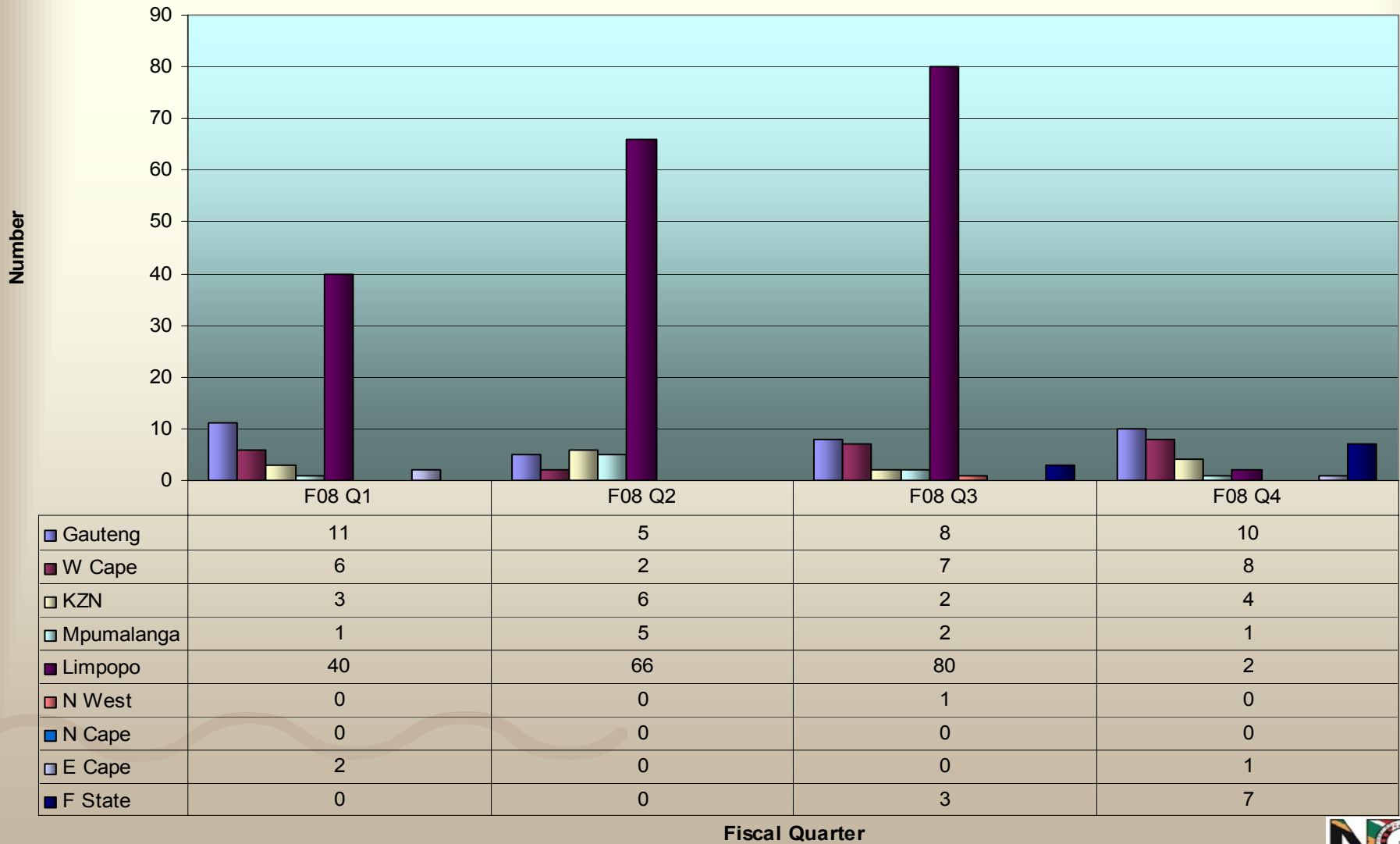


Notes

- **F2008** = 2007/2008 financial year (year ending 31 March 2008)
- **Q1** = 01 April – 30 June
- **Q2** = 01 July - 30 September
- **Q3** = 01 October – 31 December
- **Q4** = 01 January – 31 March

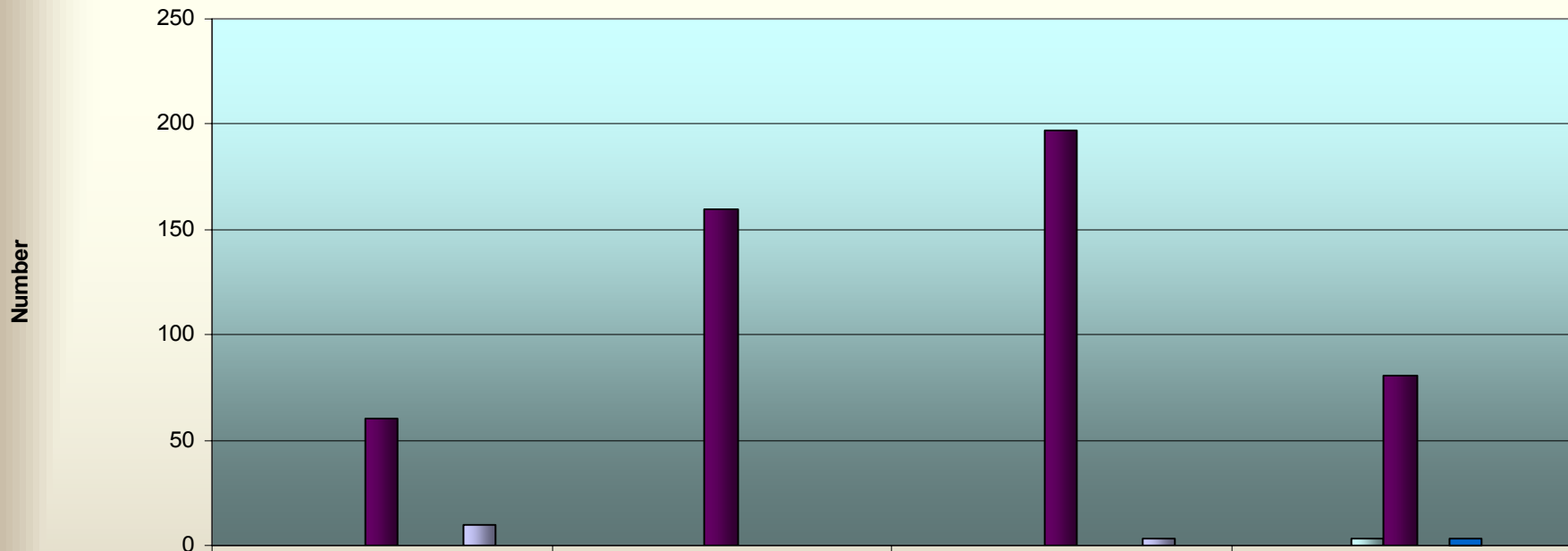
Number of Raids/Closure – F2008

Legend: Gauteng (blue), W Cape (red), KZN (yellow), Mpumalanga (light blue), Limpopo (purple), N West (orange), N Cape (dark blue), E Cape (grey), F State (dark blue)



Number of Raids (Fahfee) – F2008

Legend: Gauteng (light blue), W Cape (purple), KZN (yellow), Mpumalanga (light green), Limpopo (dark purple), N West (pink), N Cape (blue), E Cape (grey), F State (dark blue)

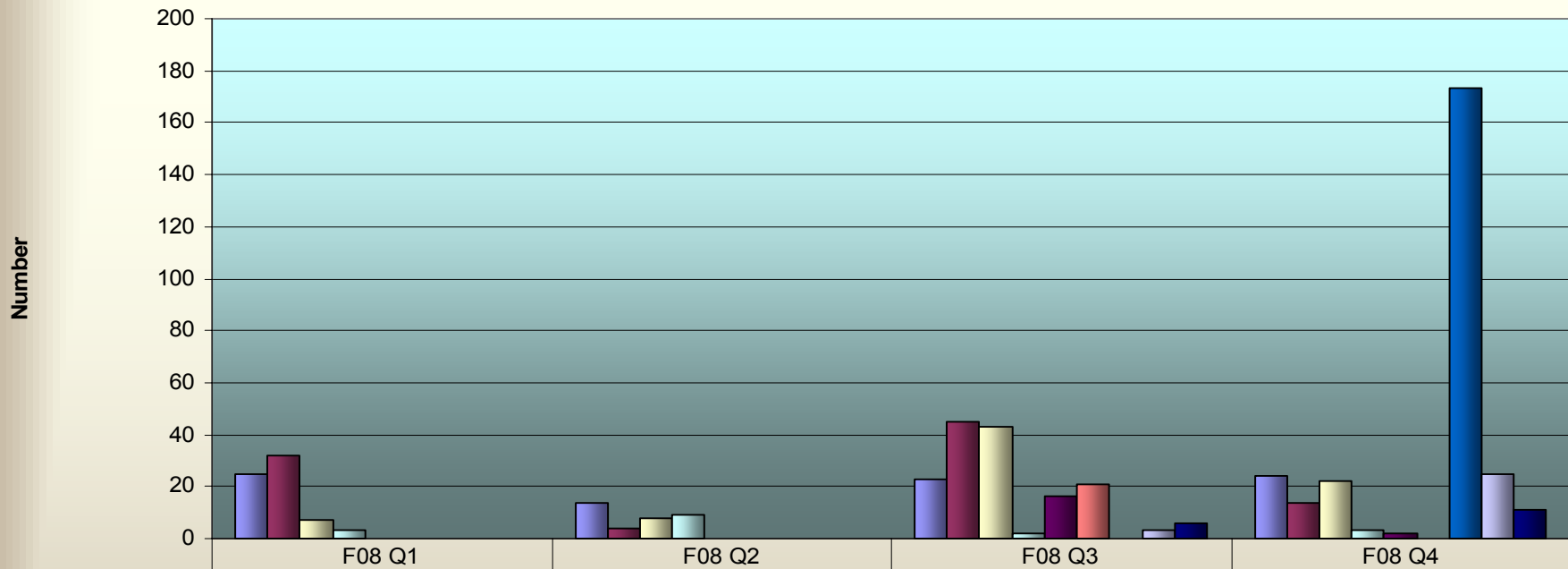


	F08 Q1	F08 Q2	F08 Q3	F08 Q4
Gauteng	0	0	0	0
W Cape	0	0	0	0
KZN	0	0	0	0
Mpumalanga	0	0	0	3
Limpopo	60	160	197	81
N West	0	0	0	0
N Cape	0	0	0	3
E Cape	10	0	3	0
F State	0	0	0	0

Fiscal Quarter

Confiscated Gambling Machines – F2008

■ Gauteng
 ■ W Cape
 ■ KZN
 ■ Mpumalanga
 ■ Limpopo
 ■ N West
 ■ N Cape
 ■ E Cape
 ■ F State

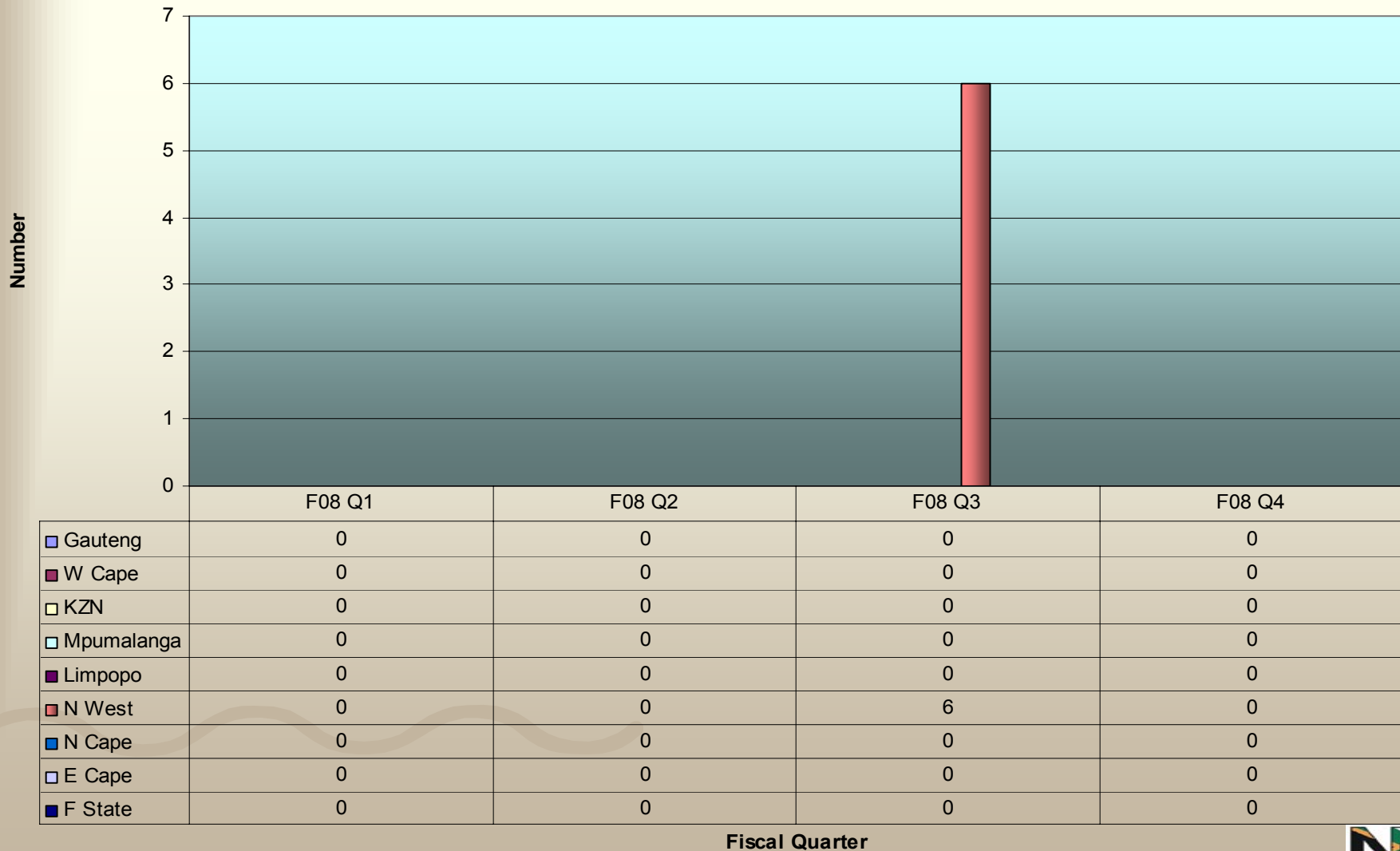


	F08 Q1	F08 Q2	F08 Q3	F08 Q4
■ Gauteng	25	14	23	24
■ W Cape	32	4	45	14
■ KZN	7	8	43	22
■ Mpumalanga	3	9	2	3
■ Limpopo	0	0	16	2
■ N West	0	0	21	0
■ N Cape	0	0	0	173
■ E Cape	0	0	3	25
■ F State	0	0	6	11

Fiscal Quarter

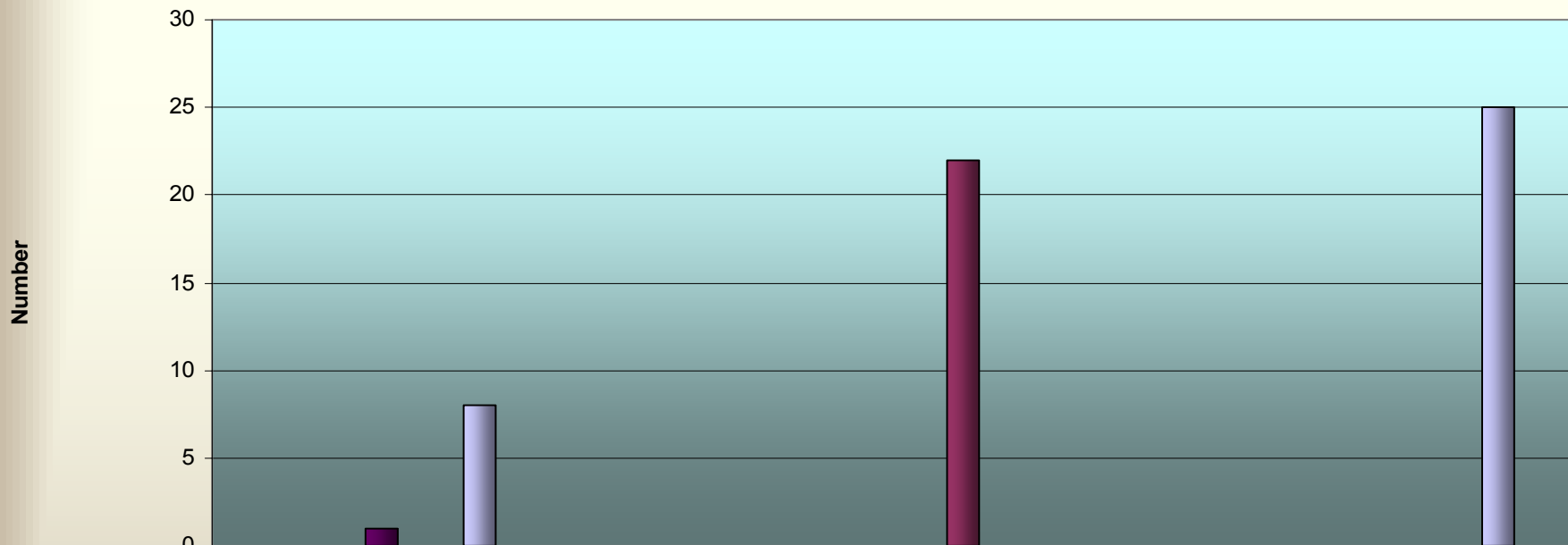
Confiscated Gambling Tables – F2008

■ Gauteng
 ■ W Cape
 ■ KZN
 ■ Mpumalanga
 ■ Limpopo
 ■ N West
 ■ N Cape
 ■ E Cape
 ■ F State



Confiscated Computer Devices – F2008

■ Gauteng
 ■ W Cape
 ■ KZN
 ■ Mpumalanga
 ■ Limpopo
 ■ N West
 ■ N Cape
 ■ E Cape
 ■ F State

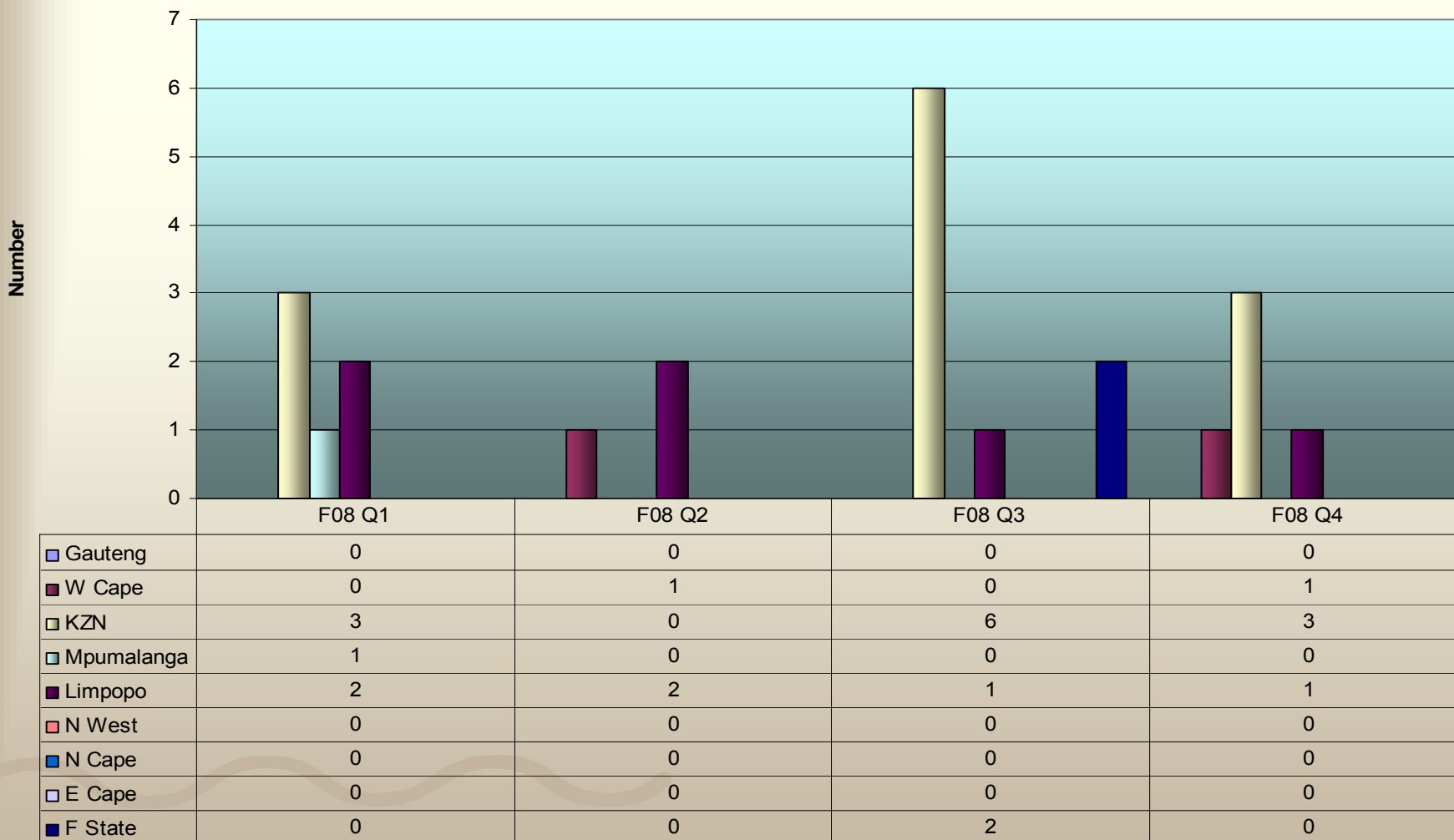


	F08 Q1	F08 Q2	F08 Q3	F08 Q4
■ Gauteng	0	0	0	0
■ W Cape	0	0	22	0
■ KZN	0	0	0	0
■ Mpumalanga	0	0	0	0
■ Limpopo	1	0	0	0
■ N West	0	0	0	0
■ N Cape	0	0	0	0
■ E Cape	8	0	0	25
■ F State	0	0	0	0

Fiscal Quarter

Case Convictions – F2008

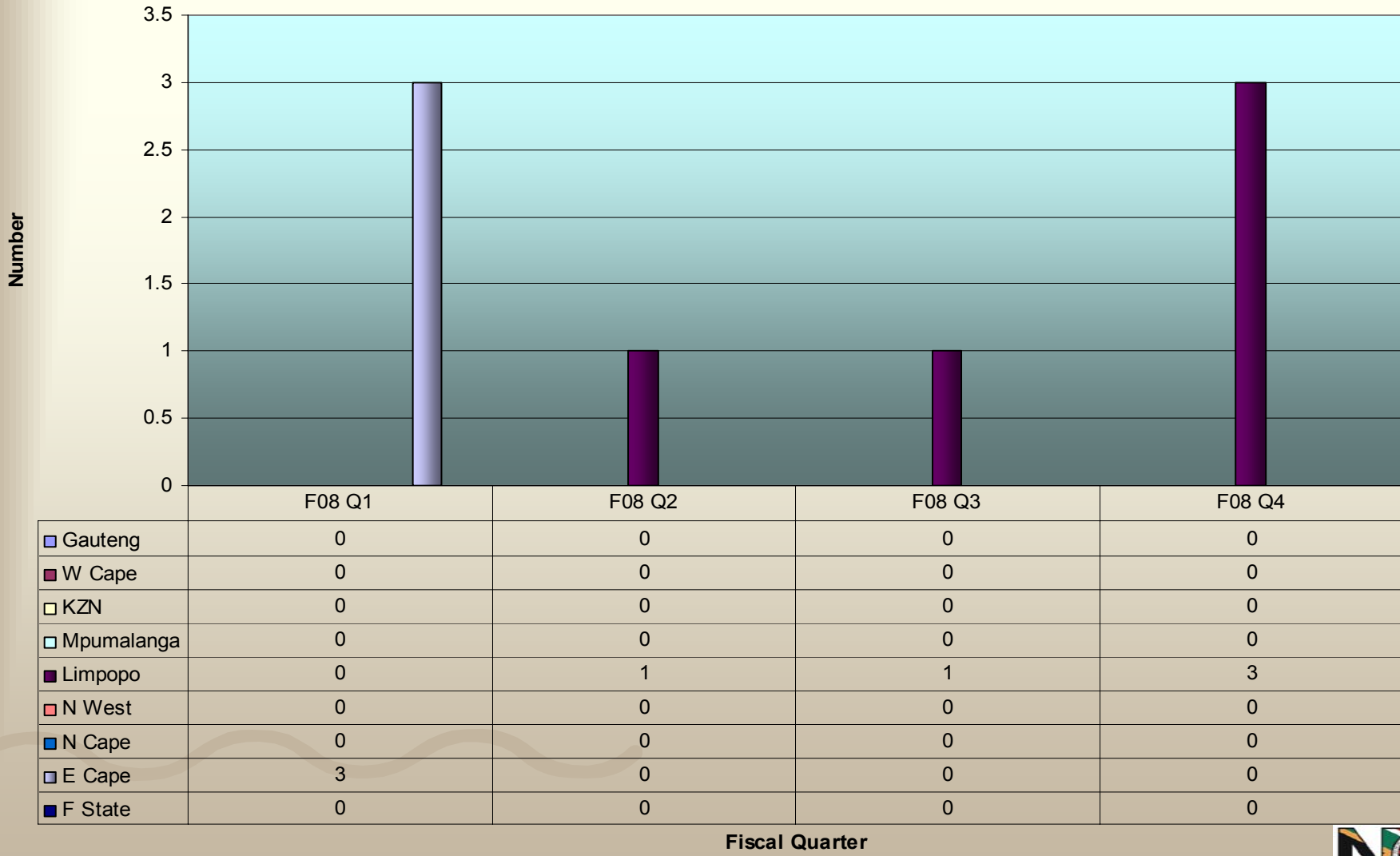
■ Gauteng
 ■ W Cape
 ■ KZN
 ■ Mpumalanga
 ■ Limpopo
 ■ N West
 ■ N Cape
 ■ E Cape
 ■ F State



Fiscal Quarter

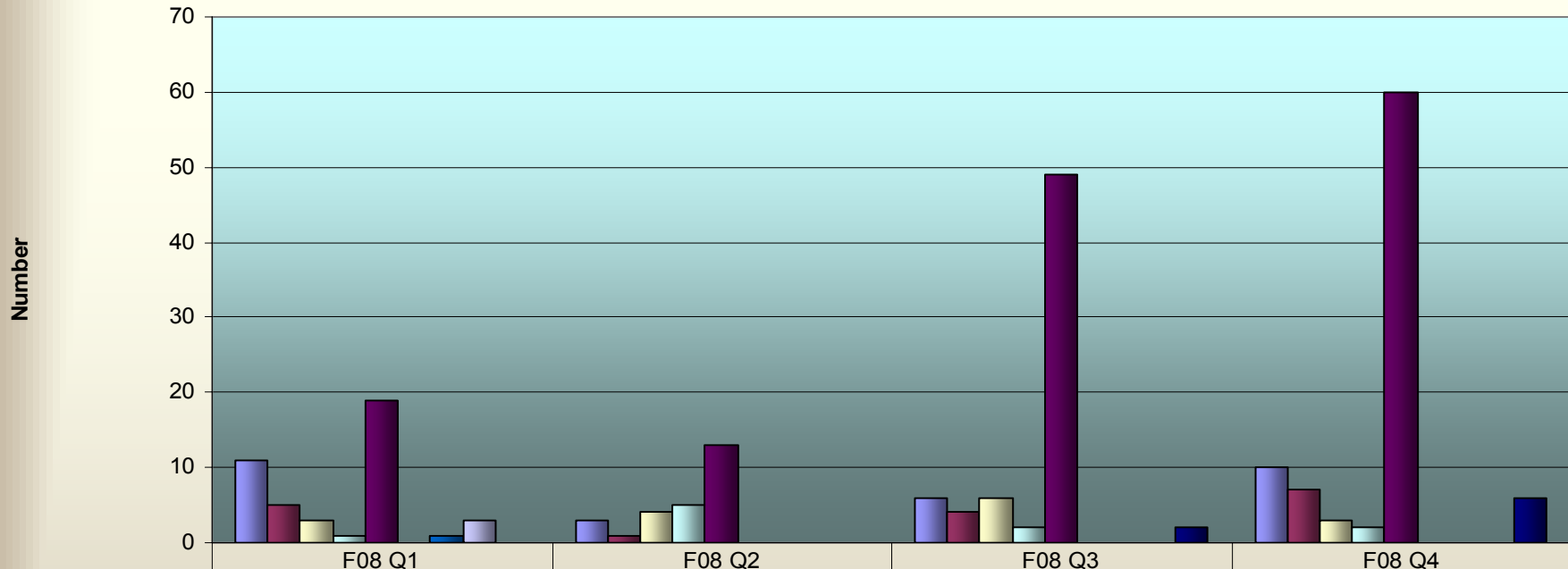
Acquittals – F2008

■ Gauteng
 ■ W Cape
 ■ KZN
 ■ Mpumalanga
 ■ Limpopo
 ■ N West
 ■ N Cape
 ■ E Cape
 ■ F State



Admission of Guilt – F2008

■ Gauteng
 ■ W Cape
 ■ KZN
 ■ Mpumalanga
 ■ Limpopo
 ■ N West
 ■ N Cape
 ■ E Cape
 ■ F State

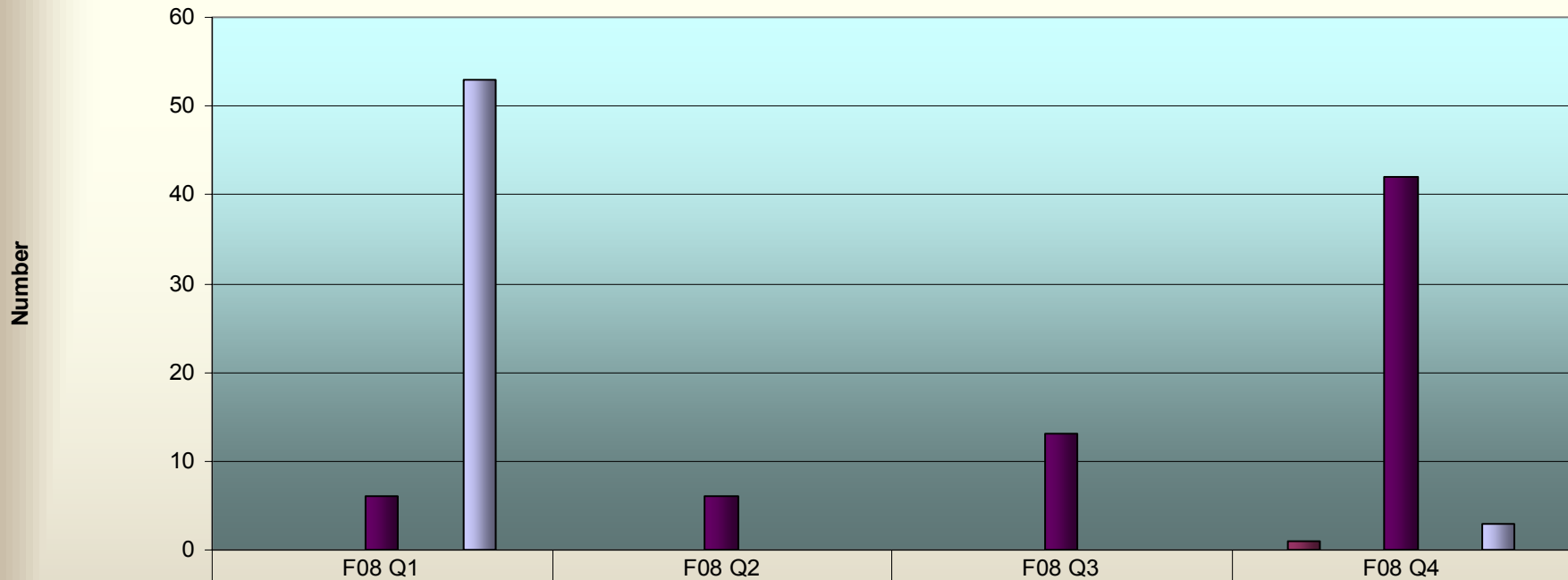


	F08 Q1	F08 Q2	F08 Q3	F08 Q4
■ Gauteng	11	3	6	10
■ W Cape	5	1	4	7
■ KZN	3	4	6	3
■ Mpumalanga	1	5	2	2
■ Limpopo	19	13	49	60
■ N West	0	0	0	0
■ N Cape	1	0	0	0
■ E Cape	3	0	0	0
■ F State	0	0	2	6

Fiscal Quarter

Withdrawals – F2008

■ Gauteng
 ■ W Cape
 ■ KZN
 ■ Mpumalanga
 ■ Limpopo
 ■ N West
 ■ N Cape
 ■ E Cape
 ■ F State

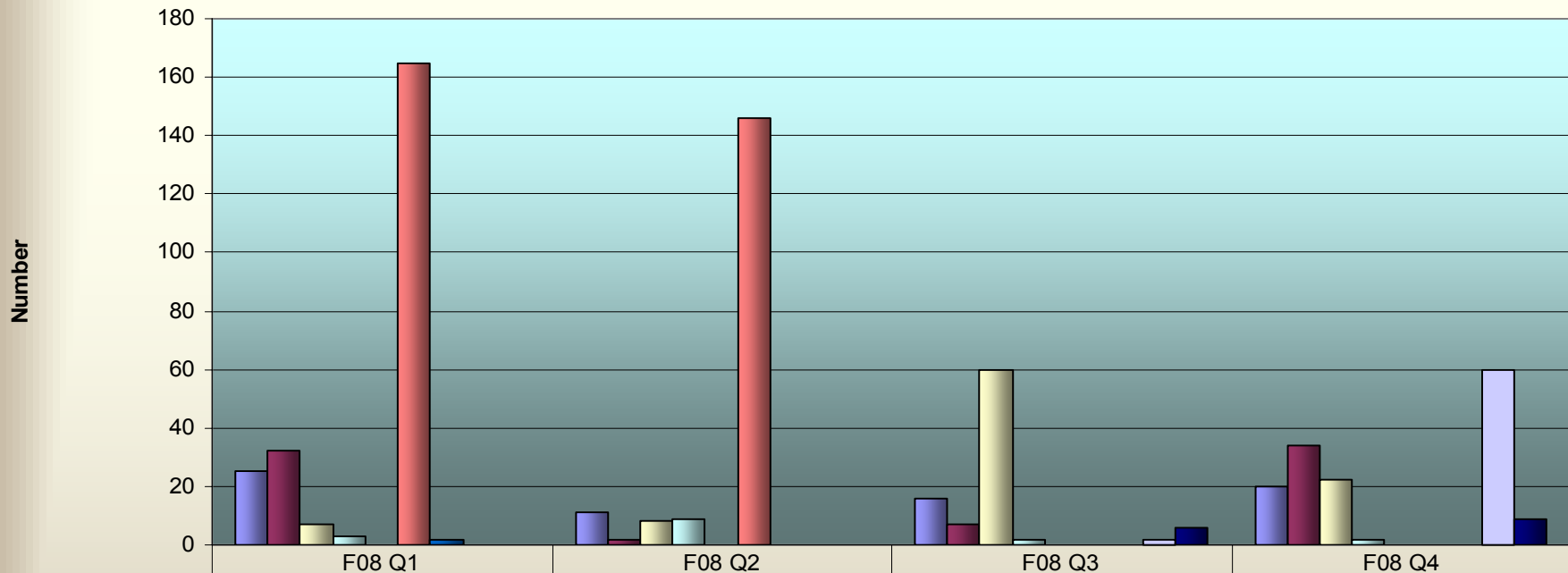


	F08 Q1	F08 Q2	F08 Q3	F08 Q4
■ Gauteng	0	0	0	0
■ W Cape	0	0	0	1
■ KZN	0	0	0	0
■ Mpumalanga	0	0	0	0
■ Limpopo	6	6	13	42
■ N West	0	0	0	0
■ N Cape	0	0	0	0
■ E Cape	53	0	0	3
■ F State	0	0	0	0

Fiscal Quarter

Forfeited Gambling Machines – F2008

■ Gauteng
 ■ W Cape
 ■ KZN
 ■ Mpumalanga
 ■ Limpopo
 ■ N West
 ■ N Cape
 ■ E Cape
 ■ F State

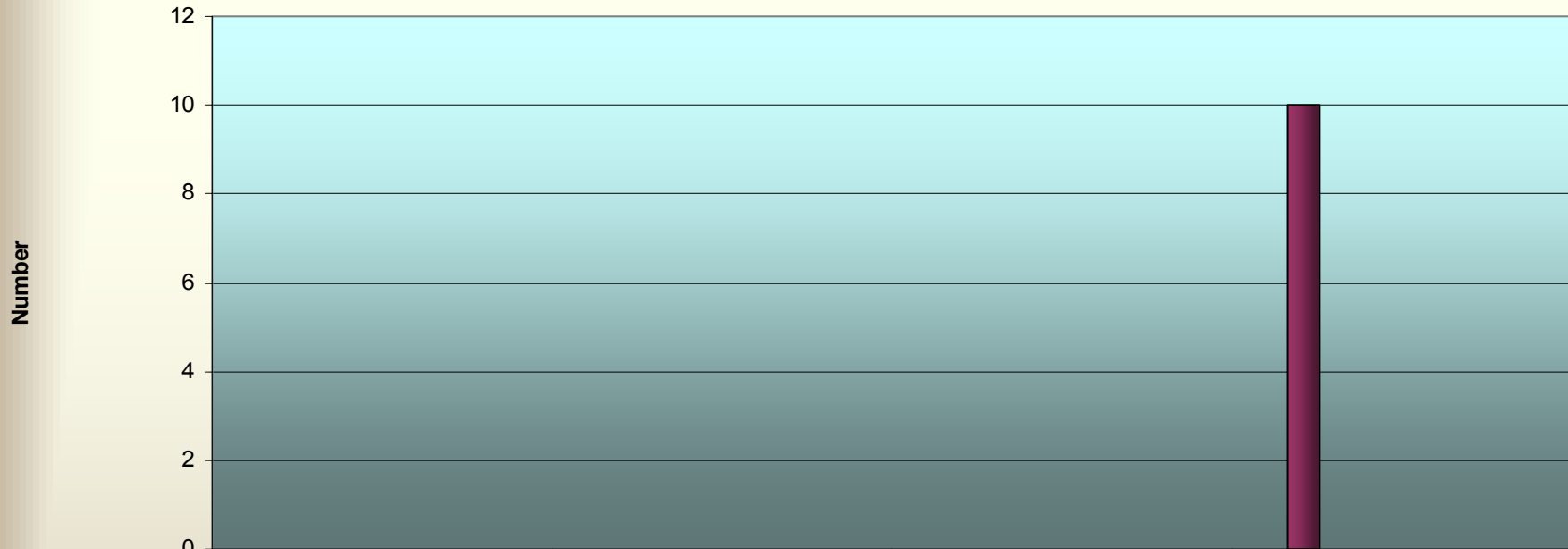


	F08 Q1	F08 Q2	F08 Q3	F08 Q4
■ Gauteng	25	11	16	20
■ W Cape	32	2	7	34
■ KZN	7	8	60	22
■ Mpumalanga	3	9	2	2
■ Limpopo	0	0	0	0
■ N West	165	146	0	0
■ N Cape	2	0	0	0
■ E Cape	0	0	2	60
■ F State	0	0	6	9

Fiscal Quarter

Forfeited Computer Devices – F2008

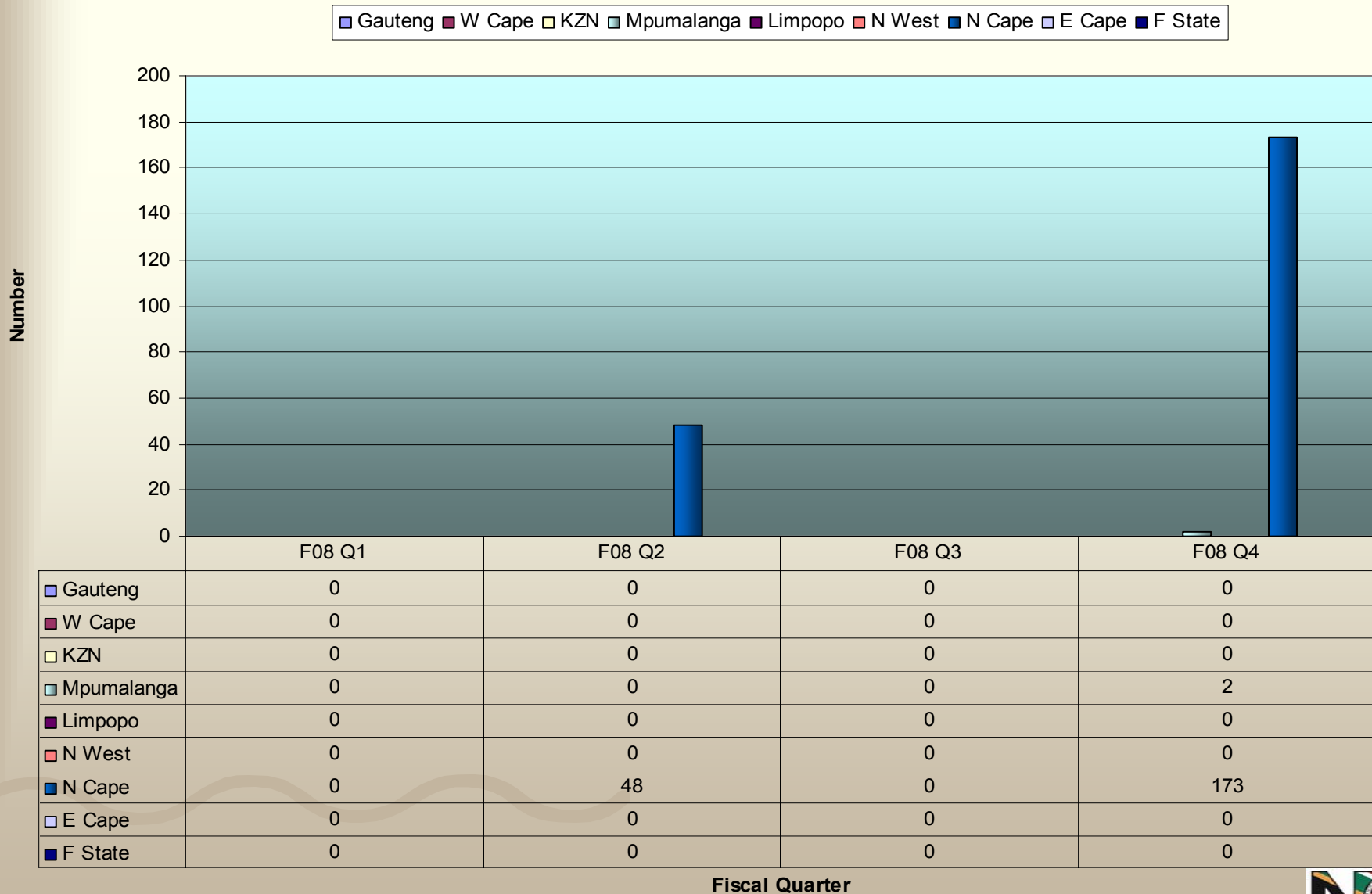
■ Gauteng
 ■ W Cape
 ■ KZN
 ■ Mpumalanga
 ■ Limpopo
 ■ N West
 ■ N Cape
 ■ E Cape
 ■ F State



	F08 Q1	F08 Q2	F08 Q3	F08 Q4
■ Gauteng	0	0	0	0
■ W Cape	0	0	0	10
■ KZN	0	0	0	0
■ Mpumalanga	0	0	0	0
■ Limpopo	0	0	0	0
■ N West	0	0	0	0
■ N Cape	0	0	0	0
■ E Cape	0	0	0	0
■ F State	0	0	0	0

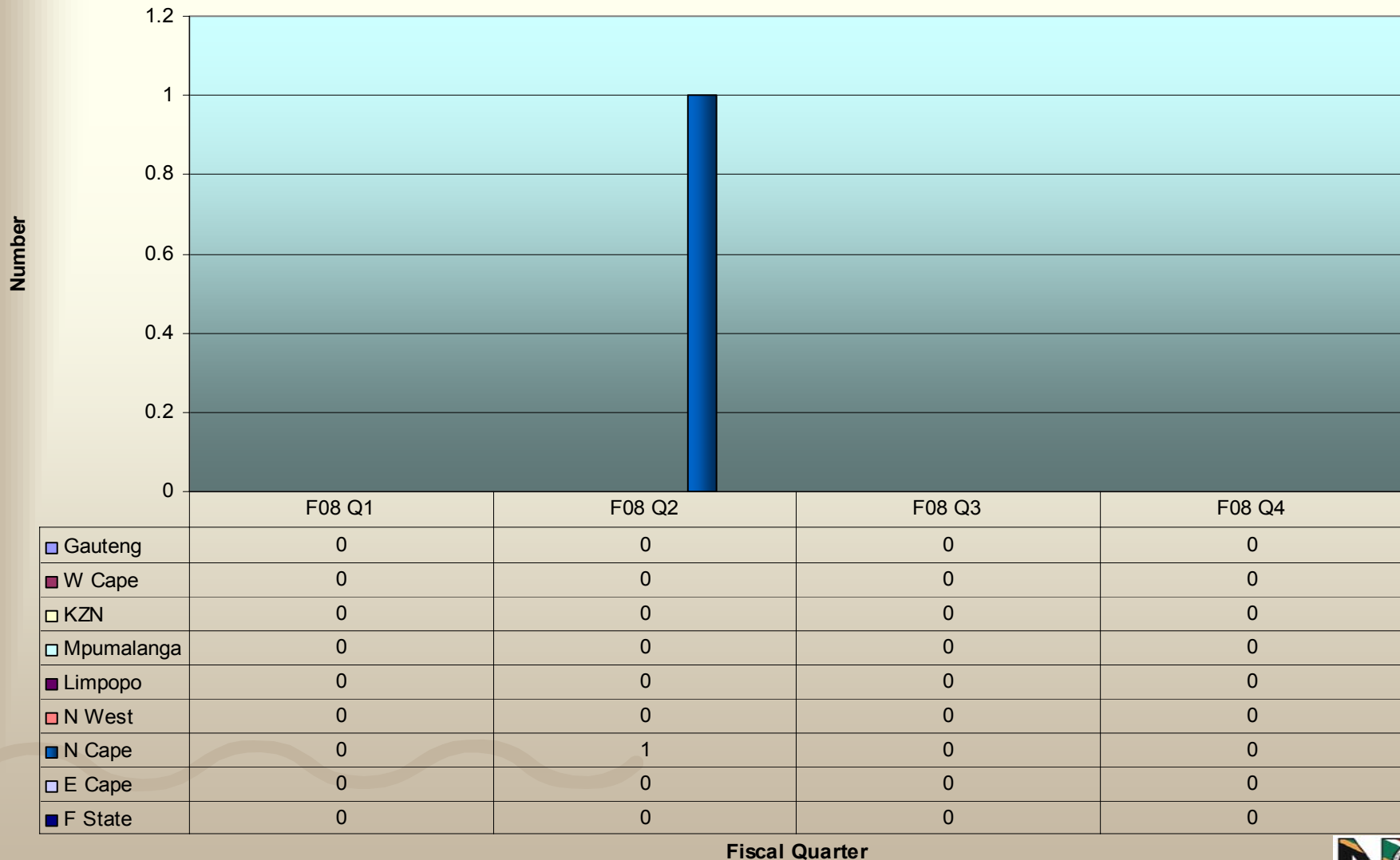
Fiscal Quarter

Returned Gambling Machines – F2008



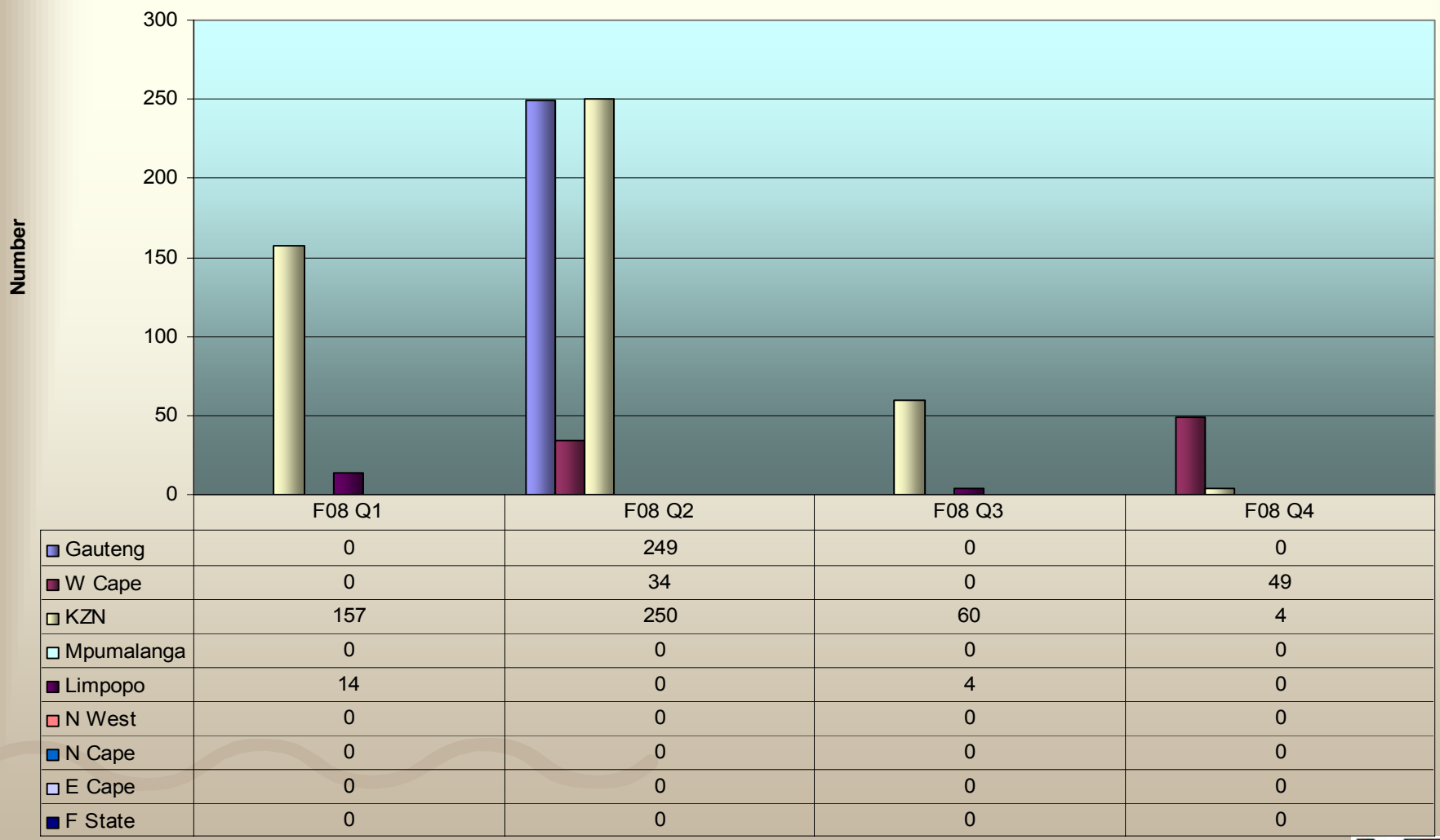
Returned Computer Devices – F2008

■ Gauteng
 ■ W Cape
 ■ KZN
 ■ Mpumalanga
 ■ Limpopo
 ■ N West
 ■ N Cape
 ■ E Cape
 ■ F State



Destroyed Gambling Machines – F2008

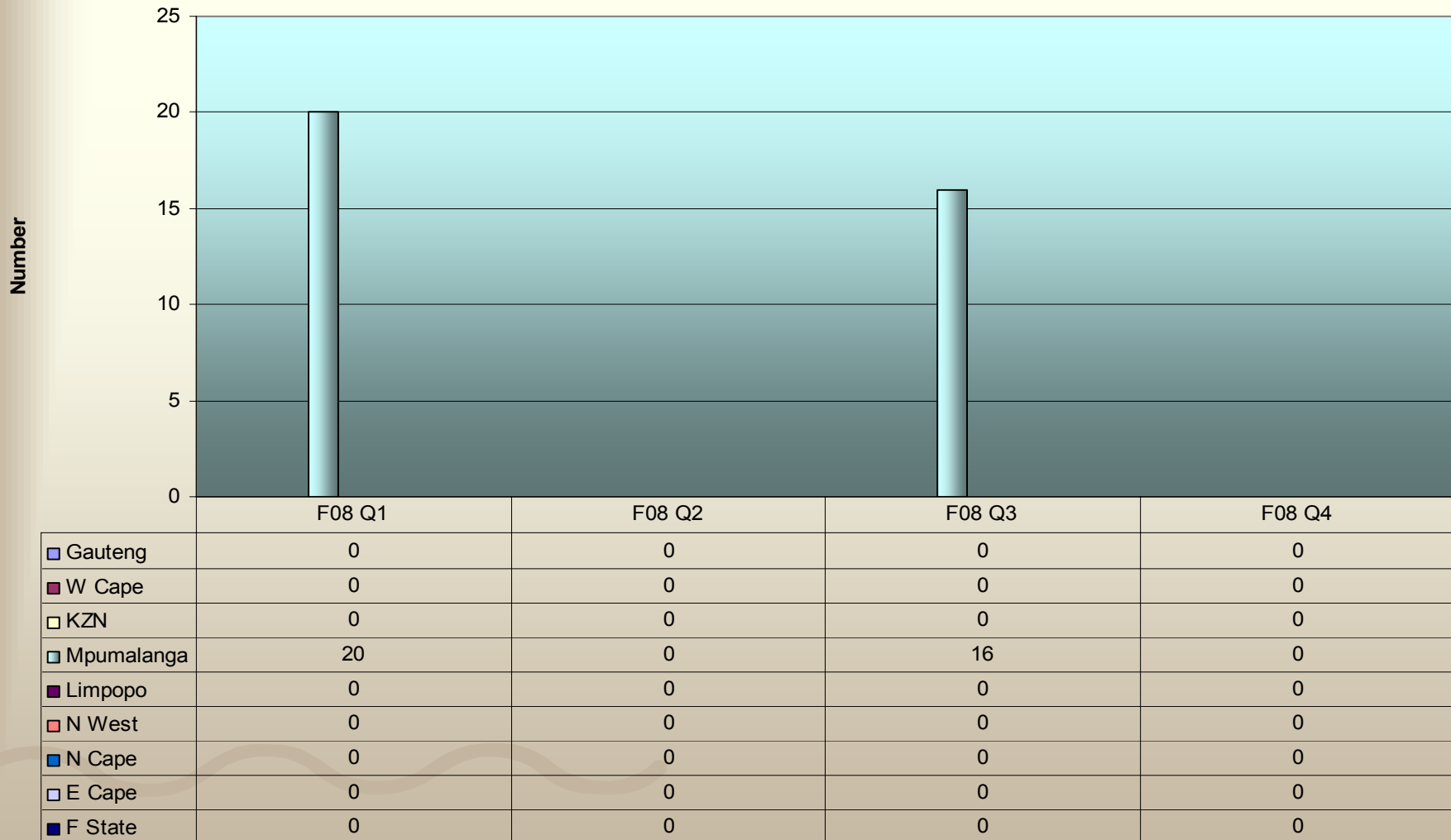
■ Gauteng
 ■ W Cape
 ■ KZN
 ■ Mpumalanga
 ■ Limpopo
 ■ N West
 ■ N Cape
 ■ E Cape
 ■ F State



Fiscal Quarter

Destroyed Gambling Tables – F2008

■ Gauteng
 ■ W Cape
 ■ KZN
 ■ Mpumalanga
 ■ Limpopo
 ■ N West
 ■ N Cape
 ■ E Cape
 ■ F State



Fiscal Quarter

Thank you

Compiled by Ms Thabiso Mango